



Pride in Place and community led regeneration

Practical lessons on what works

locality
the power of community

Overview of today

- Welcome and introductions
- Reflections on pride in place and community led regeneration
- Community led regeneration in action: Halifax and Bootle
- Locality's work to support community led governance, engagement and ownership
- Questions and panel discussion

- Informal discussion and Q+A session

The Power of Community

We believe in the power of community

We want a fair society where every community thrives

We know that local community organisations help create successful and self-confident neighbourhoods and support local people

That's why we help local community organisations to be strong and successful



About Locality

Locality is the national membership network supporting local community organisations to be strong and successful. We believe in the power of community to transform lives and create a fairer society.



Direct support
and advice



Membership network
for connection



Tools and
resources

Influencing for a
better operating
environment





Context and reflections from our experience

Community led regeneration in

practice: **Bootle**

Safe Regeneration

locality

the power of community

Over **90** young people provided
with locally-based apprenticeships,
and over **500** jobs created.



Established a community
hub with **13+** local
social enterprises



Opened a local award-
winning community pub,
the **Lock & Quay**



440+ Business start-ups &
Business supported into growth

Providing meaningful activities to
over **7,000** people per year.






**COMMUNITY
PUB HERO
AWARDS 2025**

FINALIST
Lock and Quay

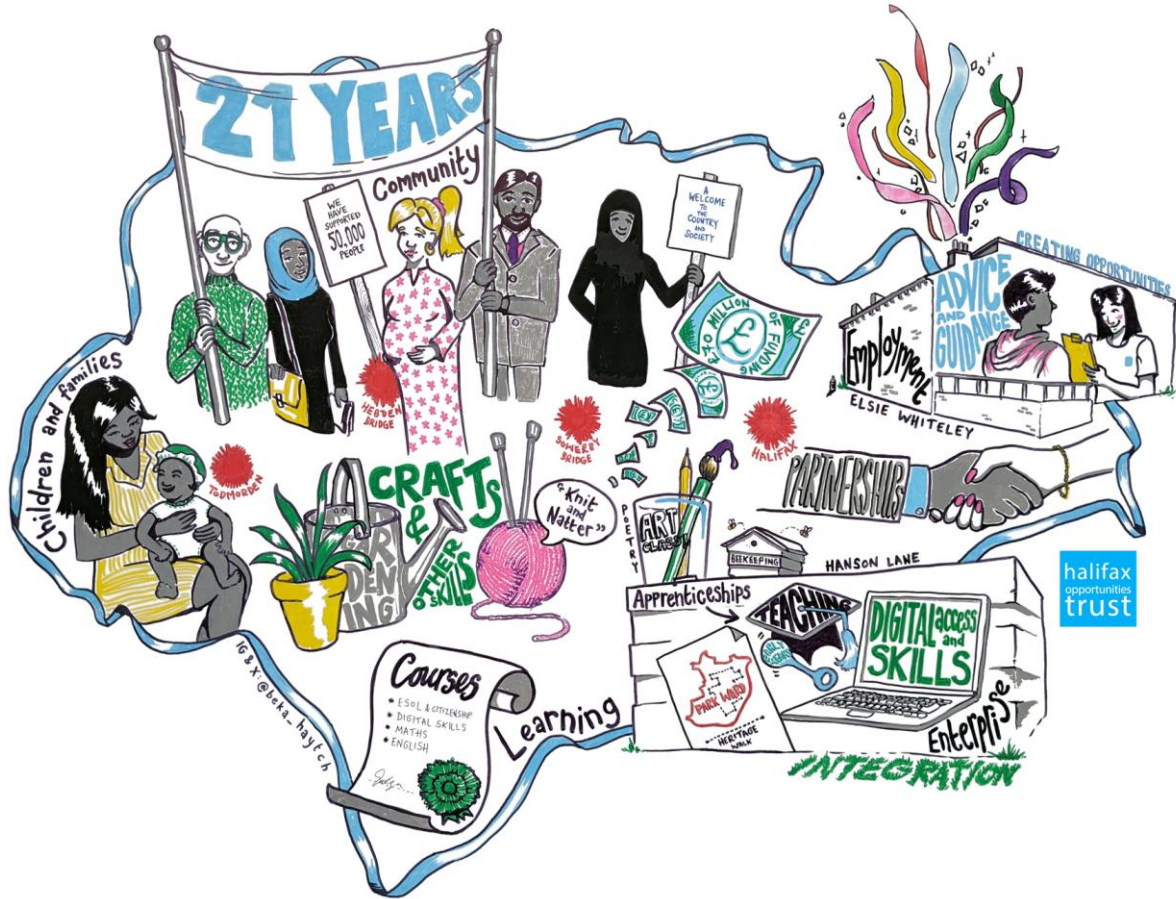
SPONSORED BY
Matthew Clark




Community led regeneration in practice: Halifax

Halifax Opportunities Trust

locality
the power of community



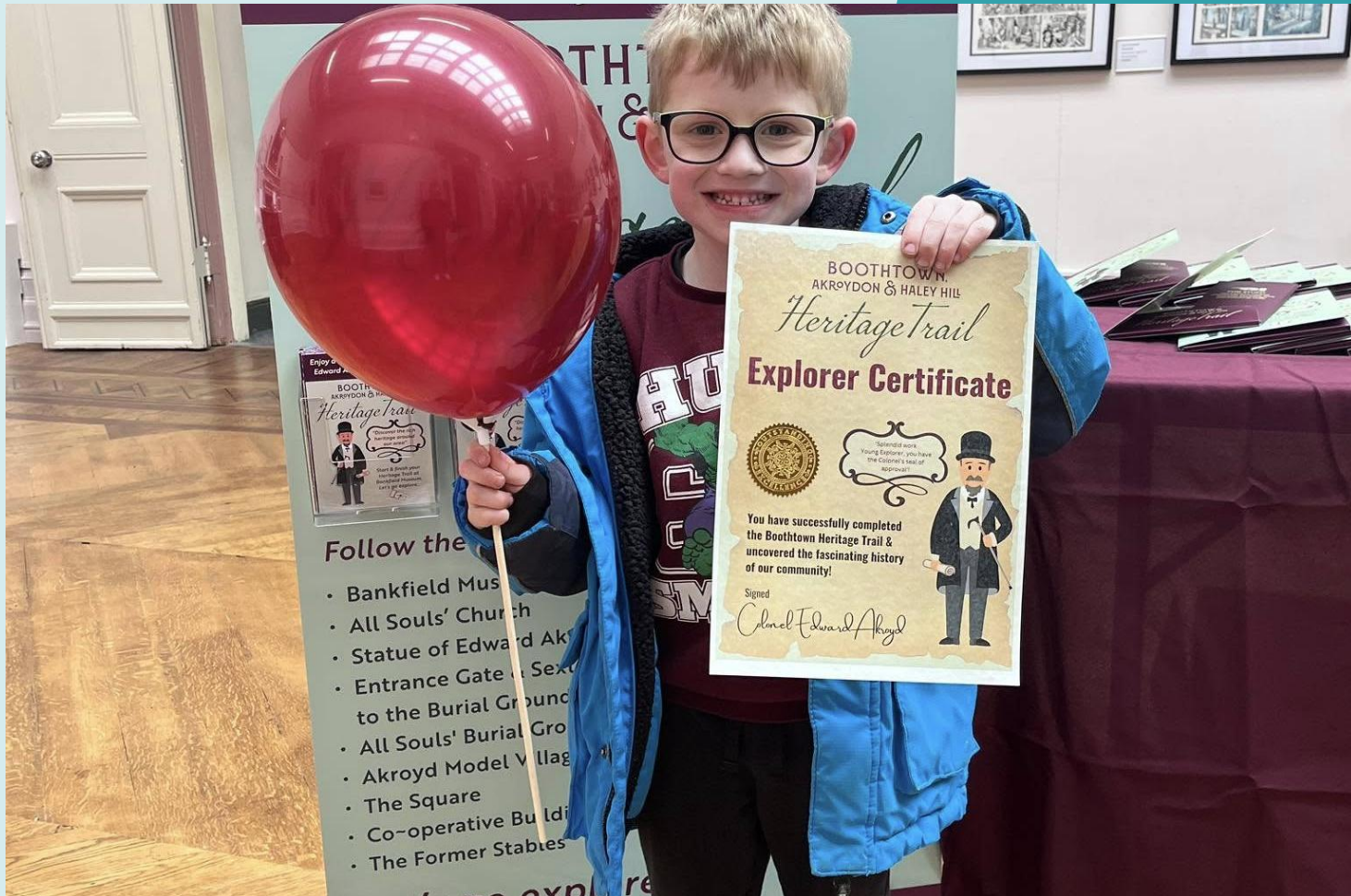
halifax
opportunities
trust











- Follow the
- Bankfield Museum
 - All Souls' Church
 - Statue of Edward Akroyd
 - Entrance Gate to Sexton's Square
 - to the Burial Ground
 - All Souls' Burial Ground
 - Akroyd Model Village
 - The Square
 - Co-operative Building
 - The Former Stables

BOOTHTOWN,
AKROYDON & HALLEY HILL

Heritage Trail

Explorer Certificate



It is with pride
that I award this
Certificate to
you for completing
the Heritage Trail.

It is with pride
that I award this
Certificate to
you for completing
the Heritage Trail.

You have successfully completed
the Boothtown Heritage Trail &
uncovered the fascinating history
of our community!

Signed
Colonel Edward Abryd







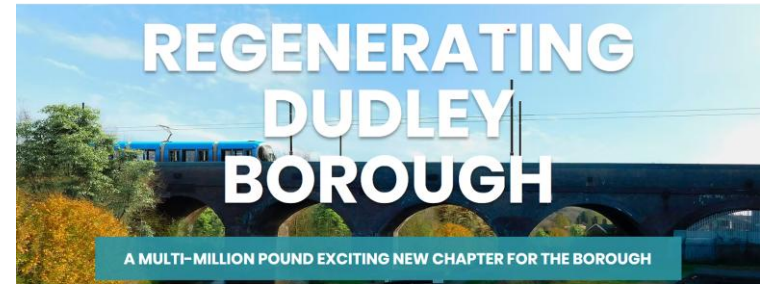
Community led regeneration in practice: Locality

Lessons from our project work

locality
the power of community

Neighbourhood Board – Training and Development

- Board formed quickly to meet programme timetable
- Focus on delivery meant limited time to develop as a Board
- Culture, ways of working, and decision-making were not yet fully shaped
- Opportunity to build skills that stay in the community



The Brief:

“...providing all Board members with a tailored package of training which will build on the existing mix of skills and expertise around the Board table to provide the board as a collective with the skills, tools and confidence to successfully fulfil their responsibilities....”

Understanding the Board

- Light-touch assessment of skills, experience, and confidence
- Mapped strengths, gaps, and different support needs
- Surfaced practical barriers to participation
- Created a baseline to shape tailored support and track progress.

Key Learning: For places setting up new boards, this step is critical. Taking time early on to understand people saves time later and helps avoid governance arrangements that unintentionally exclude voices you most want to hear.

Dudley Plan for Neighbourhoods Board - Light-touch Board Assessment

As part of its commitment to good governance, inclusive leadership, and the successful delivery of the Plan for Neighbourhoods (PIN) programme, the Dudley PIN board is working with Locality to undertake a light-touch board assessment.

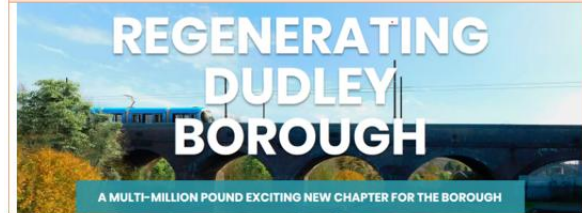
This short survey will take around 10-15 minutes to complete and will help to:

- Understand the strengths, skills, and lived experience across the Board
- Identify areas for development or support
- Plan for inclusive succession and capacity-building

All responses will be treated in the strictest confidence. Individual information will not be shared without consent, and insights will only be used to support the Board's development in line with PIN values and priorities. Your honest reflections will help us shape a stronger, more inclusive and effective Board.

If you want any help with completing the survey, or to talk through any aspect of it when completing it, then please contact kashaf.ali@locality.org.uk and we will get back to you.

Thank you for your time and contribution.



Turning Insight into Action

- Used assessment findings to create a bespoke Board training programme
- Focused on roles, responsibilities, and culture
- Reviewed and refreshed of the Governance framework
- One clear headline challenge



Key Learning: Don't start with a standard training menu. Start with evidence, co-design with the Board, and make sure learning connects directly to the decisions they're being asked to make.

Supporting Better Decision-Making

- Post Action Review for ongoing learning
- Refreshed governance framework and created Board pack
- Developed Buddying support model
- Used real-life governance scenarios from across the membership network

Buddying Programme - Intro



A simple way for Board members to support each other as you settle into your roles and work together.

Buddying is:	Buddying is not:
Supportive and confidential.	Line management or supervision.
Informal and flexible.	Formal mentoring or training.
A space for questions, reflection, and shared learning.	A replacement for Board decision-making or governance processes.

The goal is to create a safe space for learning and support

Key Learning: Practical tools such as induction packs, clear governance frameworks, reflective learning, and peer support, are essential for building confident, inclusive, and effective Boards.

Community-Led Regeneration

Governance

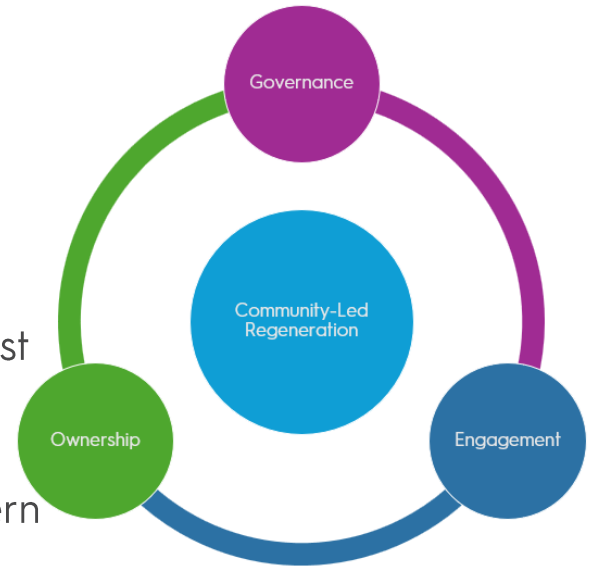
- Clear understanding of role and responsibilities
- Confidence to manage public money and risk

Engagement

- Stronger links between Board decisions and lived experience
- More inclusive engagement that informs priorities, not just consultation

Ownership

- Building community capacity to own, manage, and govern assets over time
- Creating foundations for a sustainable, community-led legacy body beyond the programme



Key Learning: Community ownership is only sustainable when governance and engagement actively build local skills, confidence, and leadership.

Draw from Experience

- Drawing on lessons from past regeneration and community-led programmes
- Using examples from Neighbourhood Renewal, Big Local, Community Ownership Fund, and Locality's membership network
- Learning from what worked and what didn't to avoid common pitfalls
- Supporting Boards to stay community-led while managing risk, pace, and public accountability

Key Learning: Using real examples from past regeneration programmes and lived experience can help Boards make better decisions, strengthen community leadership, and avoid repeating common pitfalls.



Local Trust | **Big Local**

Community Ownership Fund
support programme


Funded by
UK Government

Community asset transfer- from start to finish

04 February 2026 10:30 am - 11:30 am

This session will explore Community Asset Transfer from initially assessing the potential for a transfer, through the negotiation process to managing the building.

Learn about:

How to assess the viability of a transfer

Priority issues for community organisations and local authorities in negotiating a transfer

Key elements of the negotiation process

Taking control of the asset

Developing and refurbishing the building

Marketing the building

Managing the building.

This session is suitable for anyone from a community organisation considering an asset transfer and for local authority staff looking to understand more about the Community Asset Transfer process.

This event is open to everyone. Book on the [Locality website events page](#)



Questions and discussion

Please use the Q+A button and we'll
try and get to as many questions as
we can!

What next?

Please get in touch with us if you'd like to chat through anything you've heard or need more in depth advice or support

Please do join us for future planned events on topics related to community led regeneration and look out for further Pride in Place focused online events

Please do let us have any feedback

Look out for the follow up e mail with useful info and an essay on community power and pride in place!

 /localityUK

 @localitynews

 /locality

locality.org.uk

Locality | 33 Corsham Street,
London N1 6DR | 0345 458 8336

Locality is the trading name of
Locality (UK) a company limited
by guarantee, registered in
England no. 2787912 and a
registered charity no. 1036460.

Locality supports local community organisations to be strong and successful. Our national network of over 1,600 members helps hundreds of thousands of people every week. We offer specialist advice, peer learning and campaign with members for a fairer society. Together we unlock the power of community.

Stephen Rolph, Head of Programmes and Development

Stephen.Rolph@locality.org.uk

locality
the power of community

Our consultancy

Locality provides paid specialist advice, support and resources for community organisations, charities, social enterprises, local authorities, and others.

We have experts across the country who can help with Governance, Business Planning, Funding, Community Asset ownership, Community engagement, Impact measurement, Marketing and more!

Get in touch to find out more:

<https://locality.org.uk/consultancy-services>



Our influencing work

We work with our members to put community power at the heart of public policy.

We believe that strong local community organisations are the answer to many of the major challenges of our time. With the right resources and powers, they can transform lives and create a fairer society.



Community ownership

- Putting power and resources directly in community hands



Local decision making

- Ensuring communities have control over the important things that happen in their neighbourhoods



Local commissioning

- Enabling community organisations to provide the right services for local people



Community economic development

- Supporting communities to create resilient local economies